

Punta Sayulita Casona



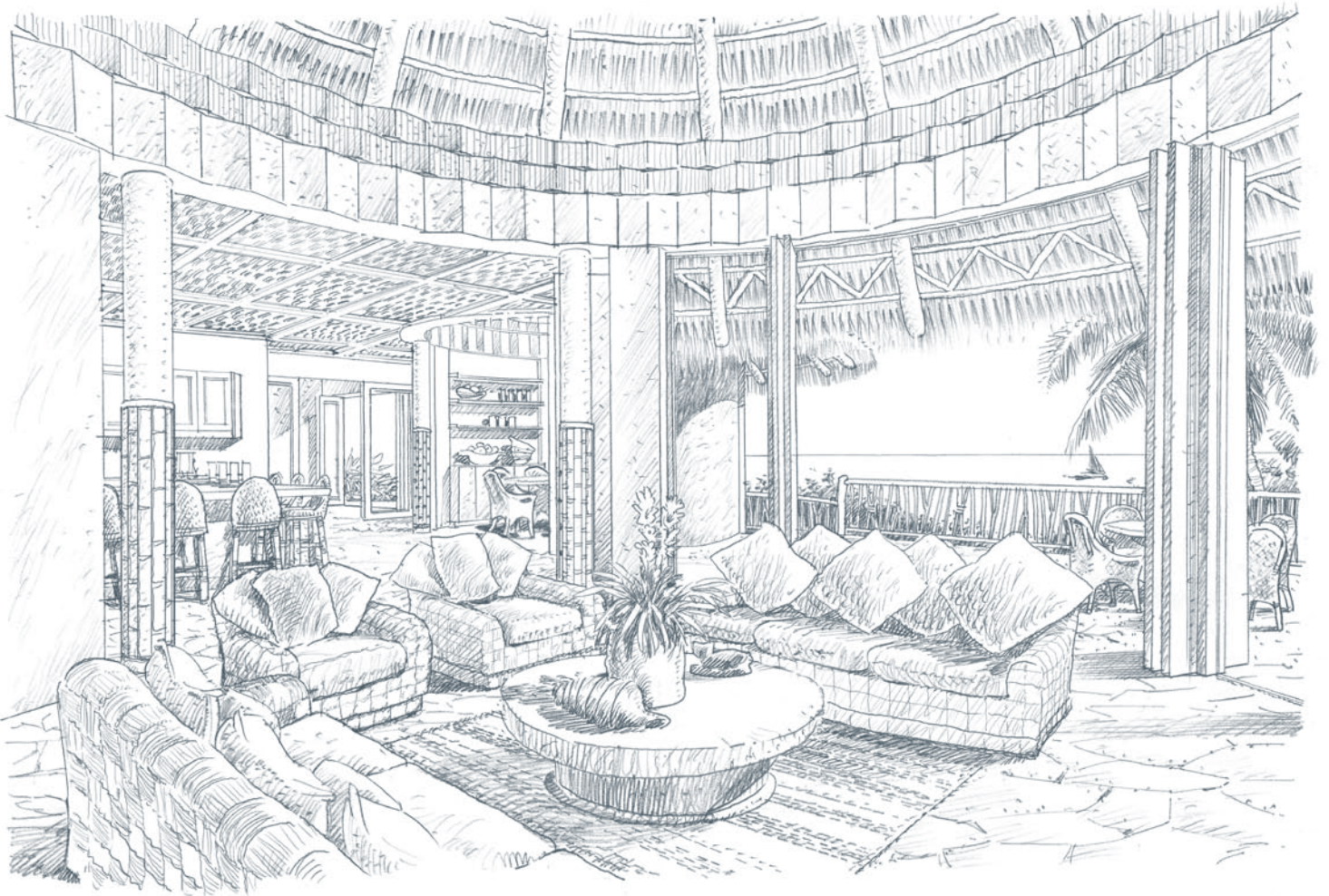
PUNTA SAYULITA

The Residences At Punta Sayulita

Taking its cue from the ancient cultures of coastal Mexico, the residences of Punta Sayulita will use locally sourced stone and hardwoods. A relatively small number of homes to be built here means that open space will be preserved and privacy can reign. Designed by the acclaimed boutique resort and residential architectural firm of de Reus Architects, the airy floor plans and tropical influences will remind that Punta Sayulita is an oceanfront playground just steps from the water. Earthen hues and a host of outdoor spaces—garden courtyards, rambling terraces, roof decks, intimate outdoor showers and private plunge pools—will help each exotic home disappear into the tropical landscape. And whether facing the bay and village of Sayulita or tucked into a slope over the open sea, every Punta Sayulita residence will showcase sweeping ocean views.

Inspired from indigenous Mexican coastal architecture, the residences at Punta Sayulita have been designed in a tropical vernacular to blend into the nearby village of Sayulita—a concept de Reus Architects refers to as “Village-Specific Design”.

Designed to today’s tropical lifestyles, the homes incorporate the use of local materials such as Palapa roofs (thatch), stone and hardwood. Perched into the three hills of Punta Sayulita, living spaces orient to unrestricted ocean and coastline views anchored with large pool terraces on the lower levels.



Artist's rendering depicting the interior of a Casona residence.

Casona

At three levels and 6,148 sq. ft., the Casona is the largest of the three home styles. In addition to maximizing views to the ocean, the Casona offers four bedroom suites, each with a full bath, a large circular living room, two separate outdoor showers, a full bath pool changing room and a powder room. The adjoining dining room and central kitchen open to a large terrace in order to facilitate the transition between indoor and al fresco activities. The upper level consists of an office, a private roof deck, staff quarters and an elevator (optional). An outdoor staircase provides access to the pool and spa below and the entertainment/recreation space on the lower level serves as a welcome extension to the pool experience.

Casona Area Summary:

Interior Area = 6,148 sq. ft.

Cart Garage = 375 sq. ft.

Exterior Pool / Terrace / Decks = 5,368 sq. ft.

Total Living Area 11,517 Sq. Ft.

<i>Entry Level</i>		
Air Conditioned Interiors	85.0 M ²	915 Ft ²
Non-Air Conditioned Interiors	207.8 M ²	2,236 Ft ²
Terraces	133.1 M ²	1,432 Ft ²
Garage	34.9 M ²	375 Ft ²
<i>Lower Level</i>		
Air Conditioned Interiors	175.7 M ²	1,891 Ft ²
Non-Air Conditioned Interiors	46.1 M ²	496 Ft ²
Pool and Terraces	238.2 M ²	2,564 Ft ²
<i>Upper Level</i>		
Air Conditioned Interiors	52.2 M ²	561 Ft ²
Non-Air Conditioned Interiors	4.4 M ²	47 Ft ²
Roof Deck	127.5 M ²	1,372 Ft ²
Total Air Conditioned Interiors	312.9 M ²	3,368 Ft ²
Total Interior	571.2 M ²	6,148 Ft ²
<i>Total Interior + Terraces</i>	<i>1,070 M²</i>	<i>11,517 Ft²</i>

Exteriors

- Rustic Integral-Color Plaster Exterior Finish
- Stone Accents
- Palapa Roof (Thatch)
- Large Common Terraces with Connecting Stairs
- Private Terraces off of Bedrooms
- Outdoor Showers
- Outdoor Dining Area
- Outdoor Gas Grill
- Outdoor Wet Bar
- Outdoor Fire Element
- Private, Heated Infinity Pool with Spa
- Solid Hardwood Front Door
- Louvered Doors
- Landscaping
- Private Golf Cart Parking

Interiors

- Natural Stone Flooring
- Smooth Plaster Interior Walls
- Exposed Palapa Roof Structure in Common Spaces
- Solid Hardwood Doors
- Zoned Air Conditioning in Bedrooms
- Ceiling Fans in Common Spaces and Bedrooms
- Wet Bar
- Pre-Wired for Satellite Television
in Common Spaces and Bedrooms
- Telephone Wired in Kitchen and Bedrooms
- Pre-Wired for High-Speed Internet Access
- Audio Pre-Wired with Speakers
in Living/Dining Rooms
- Laundry Room with Washer and Dryer
- Lockable Walk-In Closet in Master Bedroom
- Staff Quarters

Gourmet Kitchen

- Viking or Equivalent Gas Range
- Built-In Microwave
- 36" Side-by-Side Sub-Zero or Equivalent Refrigerator
with Ice Maker
- Stainless Steel Double Basin Sink
- Dishwasher
- Disposal
- Stone Counters with Stone or Tile Backsplash
- Under Cabinet Lighting
- Solid Hardwood Cabinetry

Baths

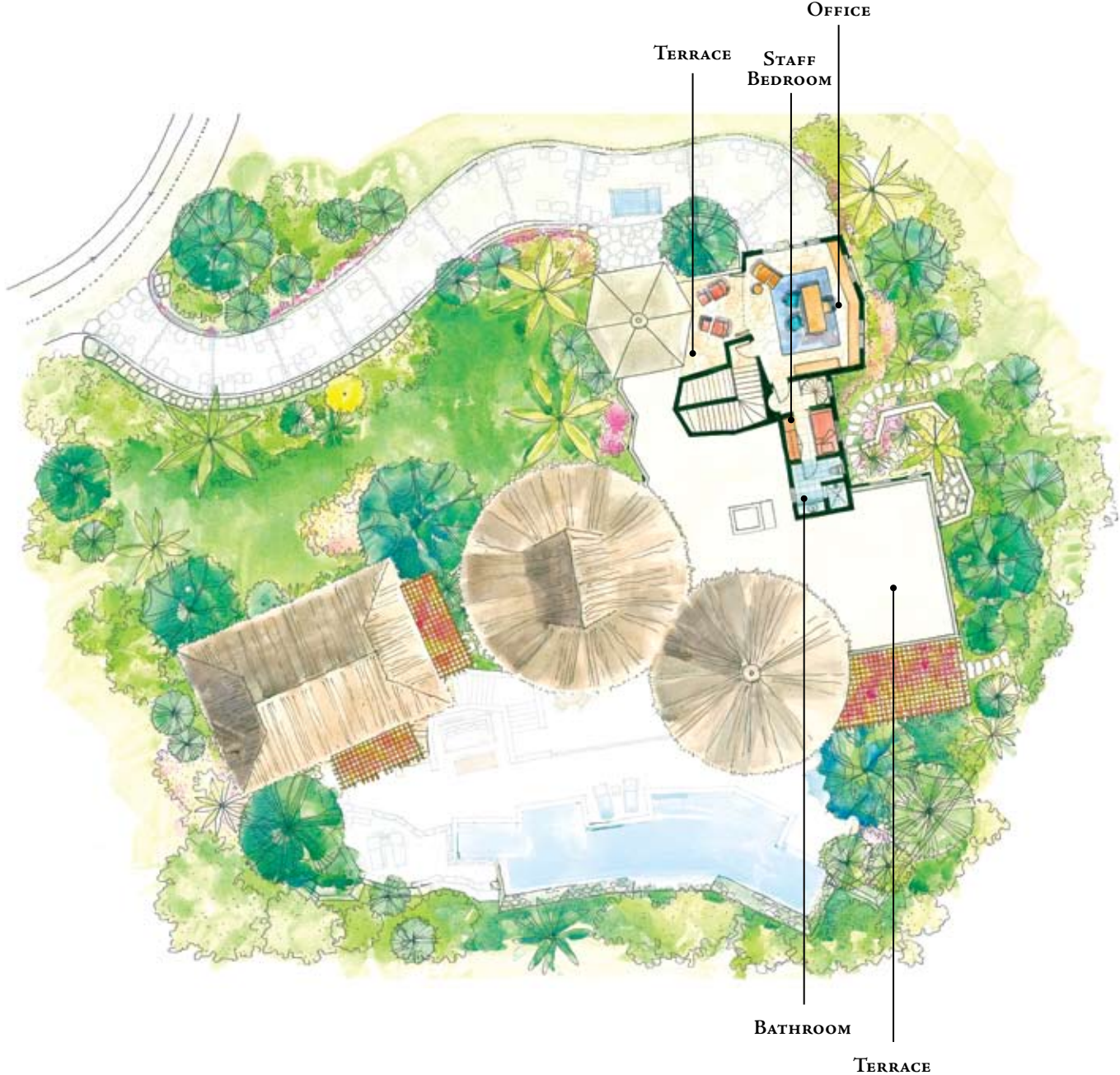
- Solid Hardwood Cabinetry
- Natural Stone Counters
- Kohler or Equivalent Bath and Toilet Fixtures
- Spacious Tiled Showers
- Twin Lavatories in all Bathrooms
- Jetted Spa Tub in Master Bathroom

Casona - Entry Level



These materials and the features and amenities depicted herein are based upon current development plans, which are subject to change without notice. No guarantee is made that the features and amenities depicted by artists' renderings or otherwise described will be built, or, if built, will be the same type, size, or nature as depicted or described. Punta Sayulita development by Punta Sayulita Ventures, S. de R.L. de C.V.

Casona - Upper Level



These materials and the features and amenities depicted herein are based upon current development plans, which are subject to change without notice. No guarantee is made that the features and amenities depicted by artists' renderings or otherwise described will be built, or, if built, will be the same type, size, or nature as depicted or described. Punta Sayulita development by Punta Sayulita Ventures, S. de R.L. de C.V.

Casona - Lower Level



These materials and the features and amenities depicted herein are based upon current development plans, which are subject to change without notice. No guarantee is made that the features and amenities depicted by artists' renderings or otherwise described will be built, or, if built, will be the same type, size, or nature as depicted or described. Punta Sayulita development by Punta Sayulita Ventures, S. de R.L. de C.V.