

Punta Sayulita Casa



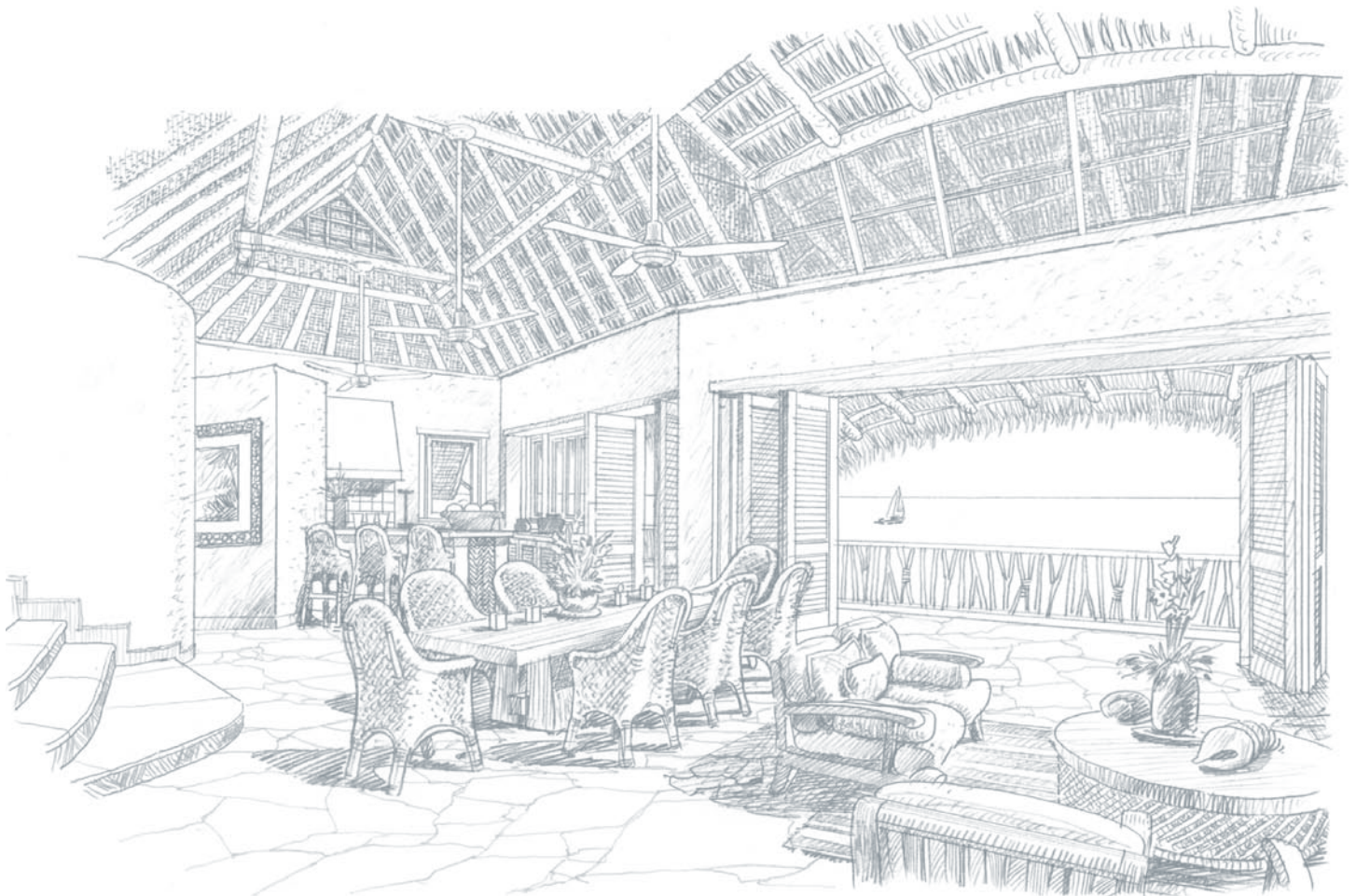
PUNTA SAYULITA

The Residences At Punta Sayulita

Taking its cue from the ancient cultures of coastal Mexico, the residences of Punta Sayulita will use locally sourced stone and hardwoods. A relatively small number of homes to be built here means that open space will be preserved and privacy can reign. Designed by the acclaimed boutique resort and residential architectural firm of de Reus Architects, the airy floor plans and tropical influences will remind that Punta Sayulita is an oceanfront playground just steps from the water. Earthen hues and a host of outdoor spaces—garden courtyards, rambling terraces, roof decks, intimate outdoor showers and private plunge pools—will help each exotic home disappear into the tropical landscape. And whether facing the bay and village of Sayulita or tucked into a slope over the open sea, every Punta Sayulita residence will showcase sweeping ocean views.

Inspired from indigenous Mexican coastal architecture, the residences at Punta Sayulita have been designed in a tropical vernacular to blend into the nearby village of Sayulita—a concept de Reus Architects refers to as “Village-Specific Design”.

Designed to today’s tropical lifestyles, the homes incorporate the use of local materials such as Palapa roofs (thatch), stone and hardwood. Perched into the three hills of Punta Sayulita, living spaces orient to unrestricted ocean and coastline views anchored with large pool terraces on the lower levels.



Artist's rendering depicting the interior of a Casa residence.

Casa

The two level, 3,467 sq. ft., Casa accommodates three bedrooms, each with a full bath, as well as two separate outdoor showers and 2 half baths. Every Casa at Punta Sayulita has expansive views to the ocean and spectacular vistas of the surrounding coastline, with direct access to the outdoor terraces making these panoramas even easier to enjoy. In addition to generous living dining and kitchen spaces, the lower level entertainment/study opens to the pool and spa amenities.

Casa Area Summary:

Interior Area = 3,467 sq. ft.

Cart Garage = 254 sq. ft.

Exterior Pool / Terrace / Decks = 3,053 sq. ft.

Total Living Area 6,520SQ.FT.

Entry Level		
Air Conditioned Interiors	66.0 M ²	710.4 Ft ²
Non-Air Conditioned Interiors	107.6 M ²	1,158 Ft ²
Terraces	85.9 M ²	924 Ft ²
Garage	23.6 M ²	254 Ft ²
Lower Level		
Air Conditioned Interiors	100.7 M ²	1,083 Ft ²
Non-Air Conditioned Interiors	47.8 M ²	514.5 Ft ²
Pool and Terraces	197.8 M ²	2,129 Ft ²
Total Air Conditioned Interiors	166.7 M ²	1,794 Ft ²
Total Interior	322.1 M ²	3,467 Ft ²
Total Interior + Terraces	605.8 M²	6,520 Ft²

Exteriors

- Rustic Integral-Color Plaster Exterior Finish
- Stone Accents
- Palapa Roof (Thatch)
- Large Upper and Lower Terraces
- Outdoor Stair Connecting Terraces
- Outdoor Dining Area
- Outdoor Gas Grill
- Outdoor Wet Bar
- Outdoor Fire Element
- Private, Heated Infinity Pool with Spa
- Outdoor Showers
- Solid Hardwood Front Door
- Louvered Doors
- Landscaping at Entry and around Pool Terrace
- Private Golf Cart Parking

Interiors

- Natural Stone Flooring
- Smooth Plaster Interior Walls
- Exposed Palapa Roof Structure in Common Spaces
- Solid Hardwood Doors
- Zoned Air Conditioning in Bedrooms and Library
- Ceiling Fans in Common Spaces and Bedrooms
- Pre-Wired for Satellite Television
in Common Spaces and Bedrooms
- Telephone Wired in Kitchen and Bedrooms
- Pre-Wired for High-Speed Internet Access
- Audio Pre-Wired with Speakers in Living/Dining Rooms
- Wet Bar
- Full Pantry Adjacent to Kitchen
- Laundry Room with Washer and Dryer
- Lockable Walk-In Closet in Master Bedroom

Gourmet Kitchen

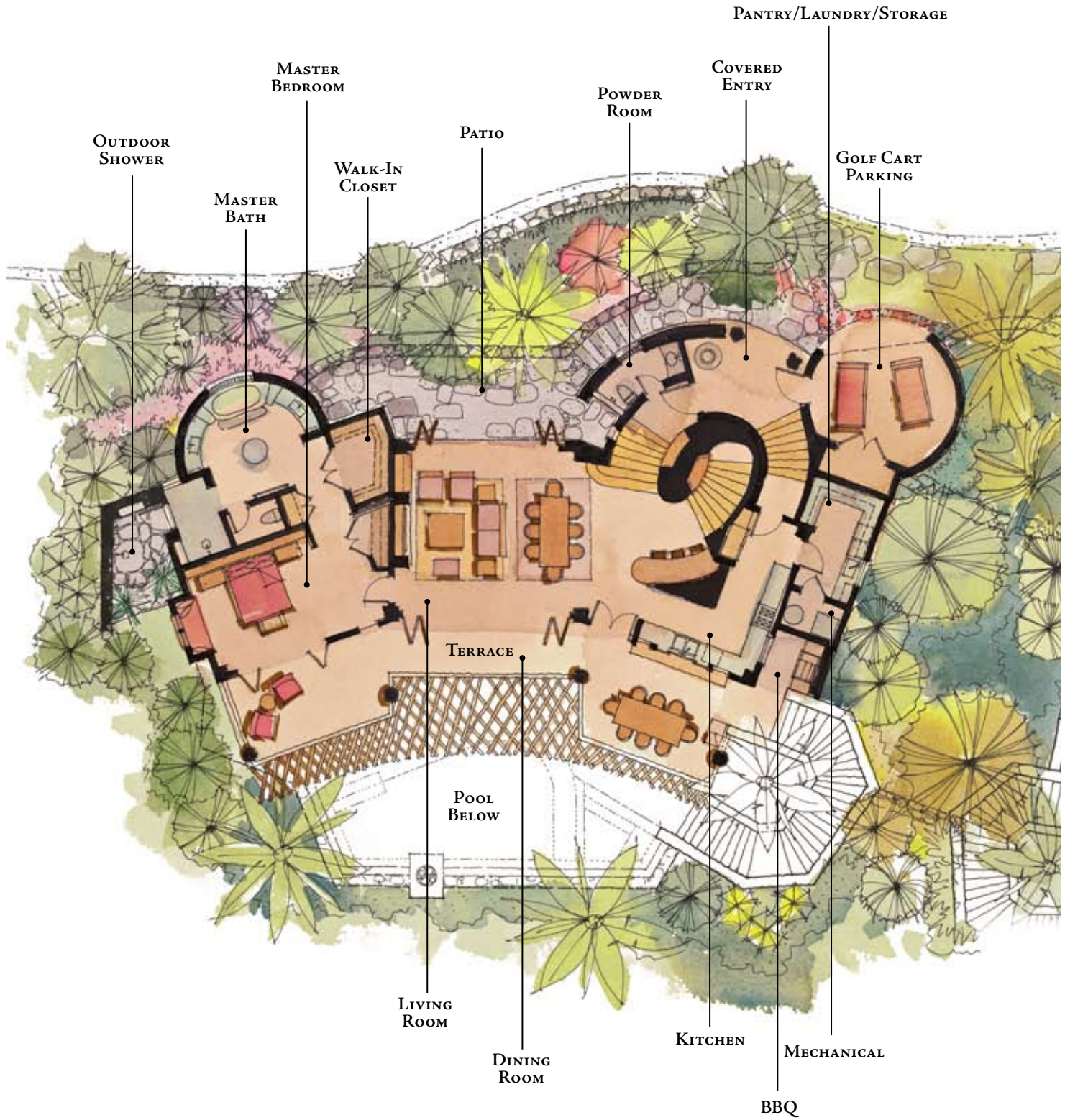
- Viking or Equivalent Gas Range
- Built-In Microwave
- 36" Side-by-Side Sub-Zero or
Equivalent Refrigerator with Ice Maker
- Stainless Steel Double Basin Sink
- Dishwasher
- Disposal

- Stone Counters with Stone or Tile Backsplash
- Under Cabinet Lighting
- Solid Hardwood Cabinetry

Baths

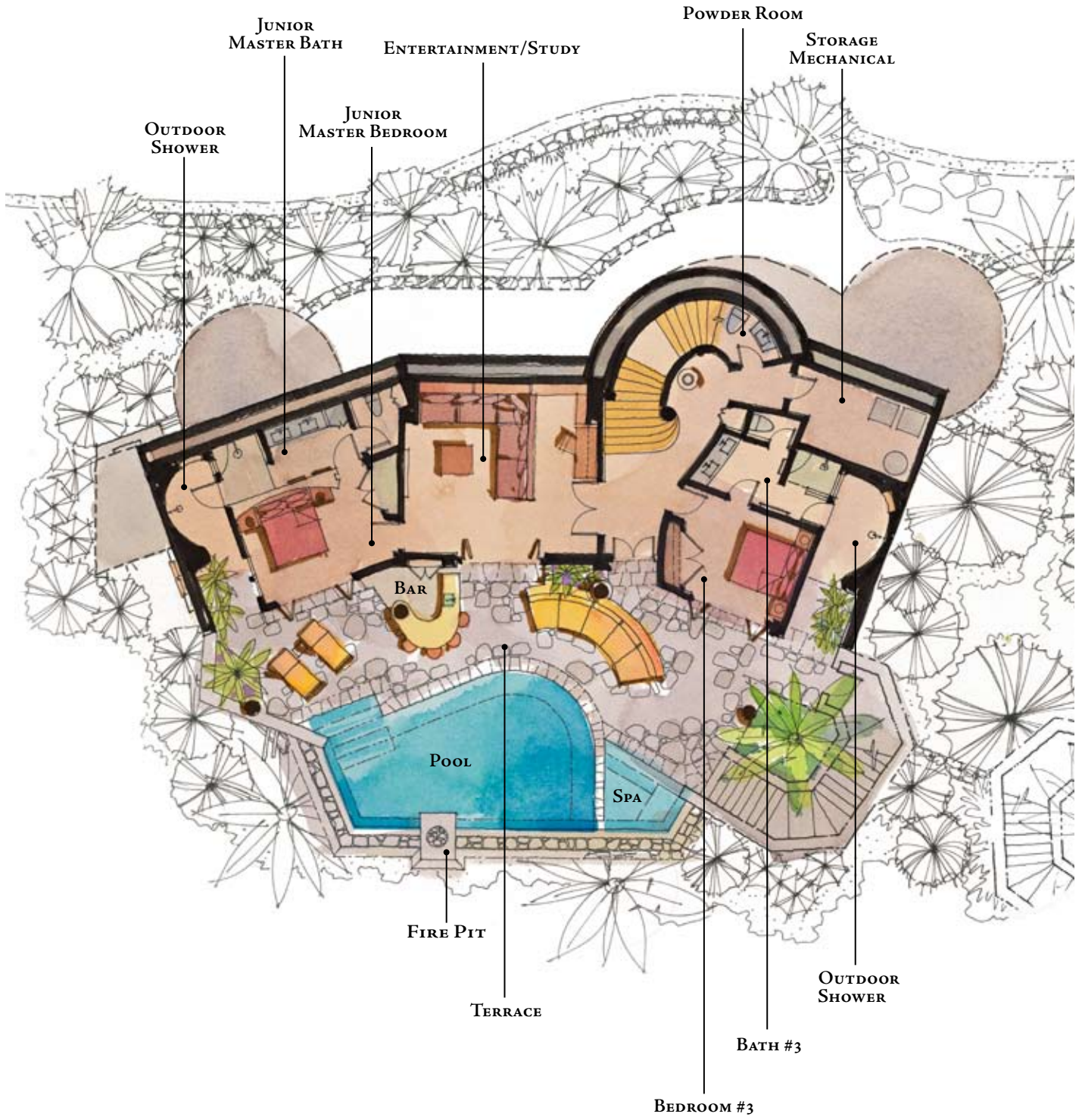
- Solid Hardwood Cabinetry
- Natural Stone Counters
- Kohler or Equivalent Bath and Toilet Fixtures
- Spacious Tiled Showers
- Twin Lavatories in all Bathrooms
- Jetted Spa Tub in Master Bathroom

Casa - Entry Level



These materials and the features and amenities depicted herein are based upon current development plans, which are subject to change without notice. No guarantee is made that the features and amenities depicted by artists' renderings or otherwise described will be built, or, if built, will be the same type, size, or nature as depicted or described. Punta Sayulita development by Punta Sayulita Ventures, S. de R.L. de C.V.

Casa - Lower Level



These materials and the features and amenities depicted herein are based upon current development plans, which are subject to change without notice. No guarantee is made that the features and amenities depicted by artists' renderings or otherwise described will be built, or, if built, will be the same type, size, or nature as depicted or described. Punta Sayulita development by Punta Sayulita Ventures, S. de R.L. de C.V.